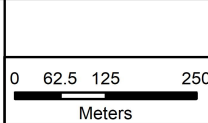


Legend

- Historic Drilling
- 2020/2021 Eagle Drilling
- Eagle_NR_Sections
- Granodiorite
- Reserve_Pit



Projection:
NAD83
UTM Zone 8N

Date:
February 20, 2021

Drawn By:
HK

Scale:
As shown

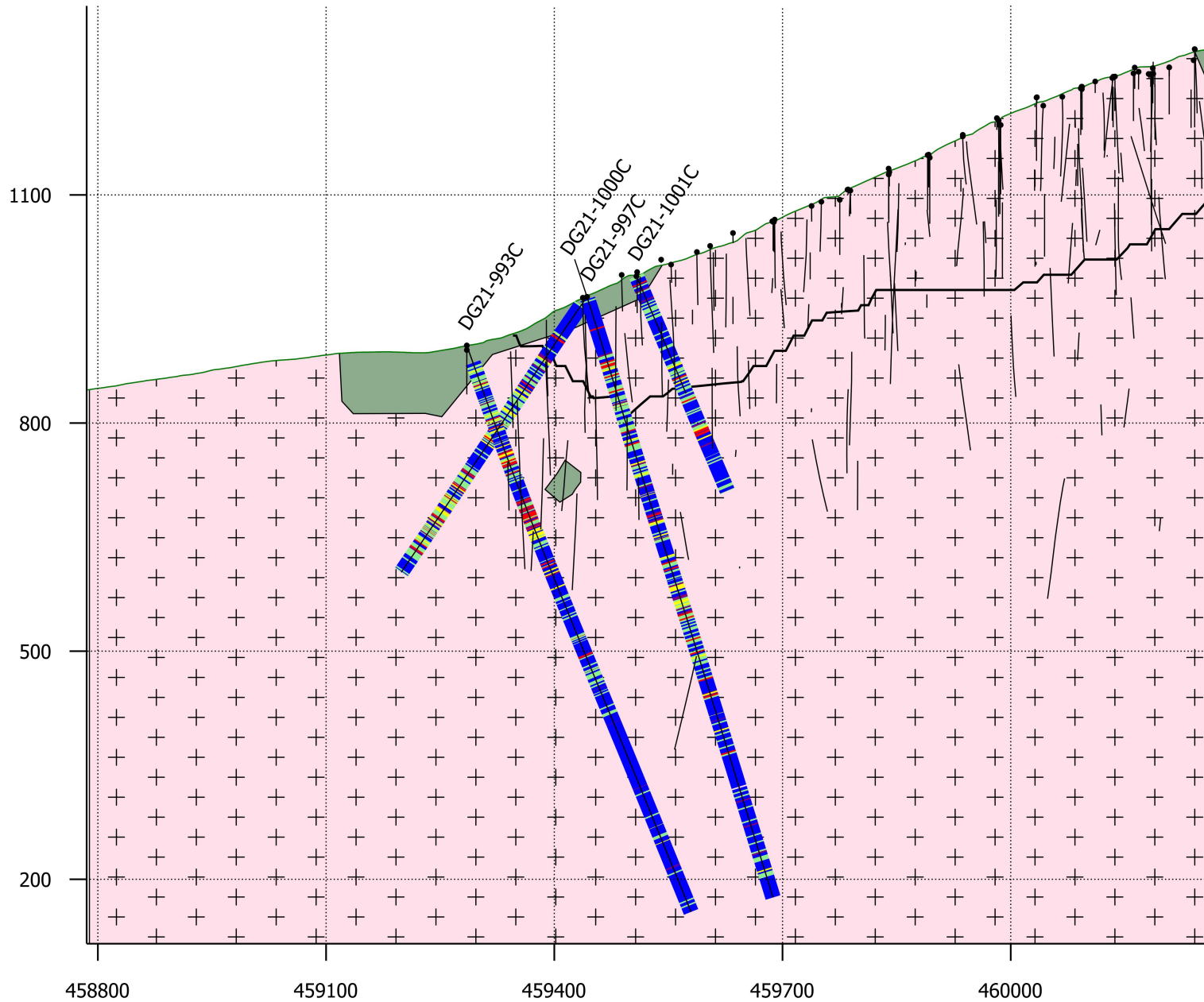
**VICTORIA GOLD PROJECTS
YUKON TERRITORY**

2020/2021 Eagle
Exploration

W

Eagle Deep Section 1

E



Legend

Au_Final

- Blue: ≤ 0.1
- Red: ≤ 1.5
- Green: ≤ 0.5
- Purple: > 1.5
- Yellow: ≤ 0.8

Surfaces

- Black line: Reserve Pit
- Green line: Topography

GM

- Pink box: Granodiorite
- Green box: Sediment

- Black dot and line: Historic Drillhole

Location

E: 458785, 7099467

W: 460267, 7099467

Scale: 1:7,500

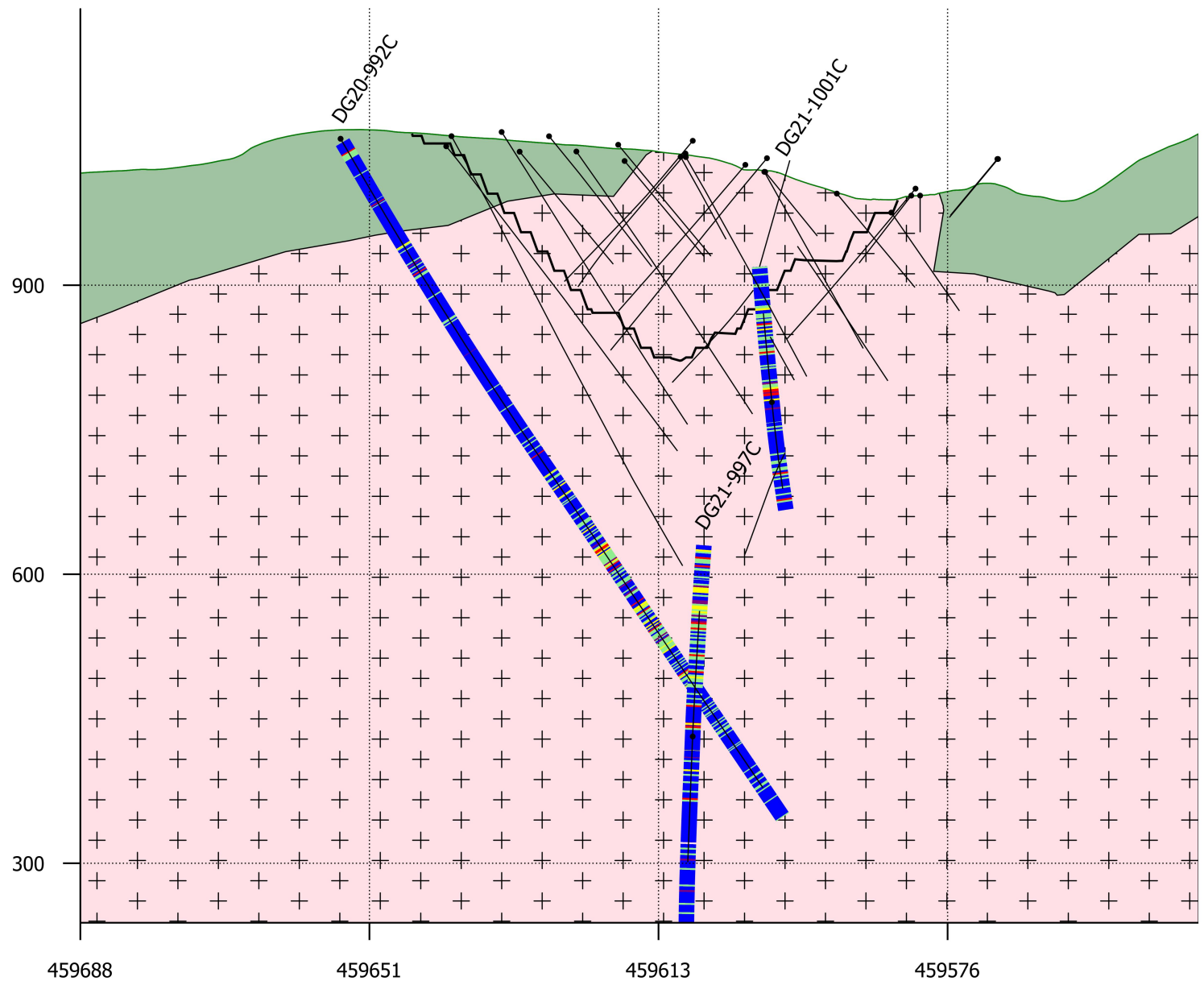
Vertical exaggeration: 1x



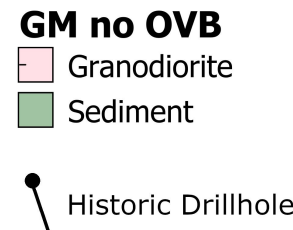
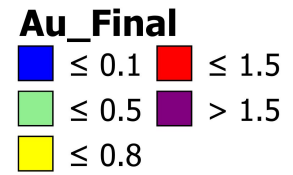
Eagle Deep Section 2

A

B

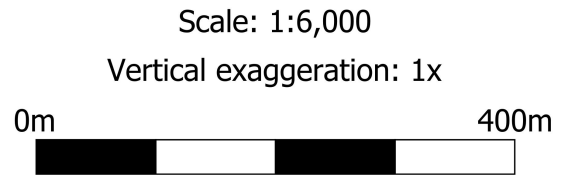


Legend



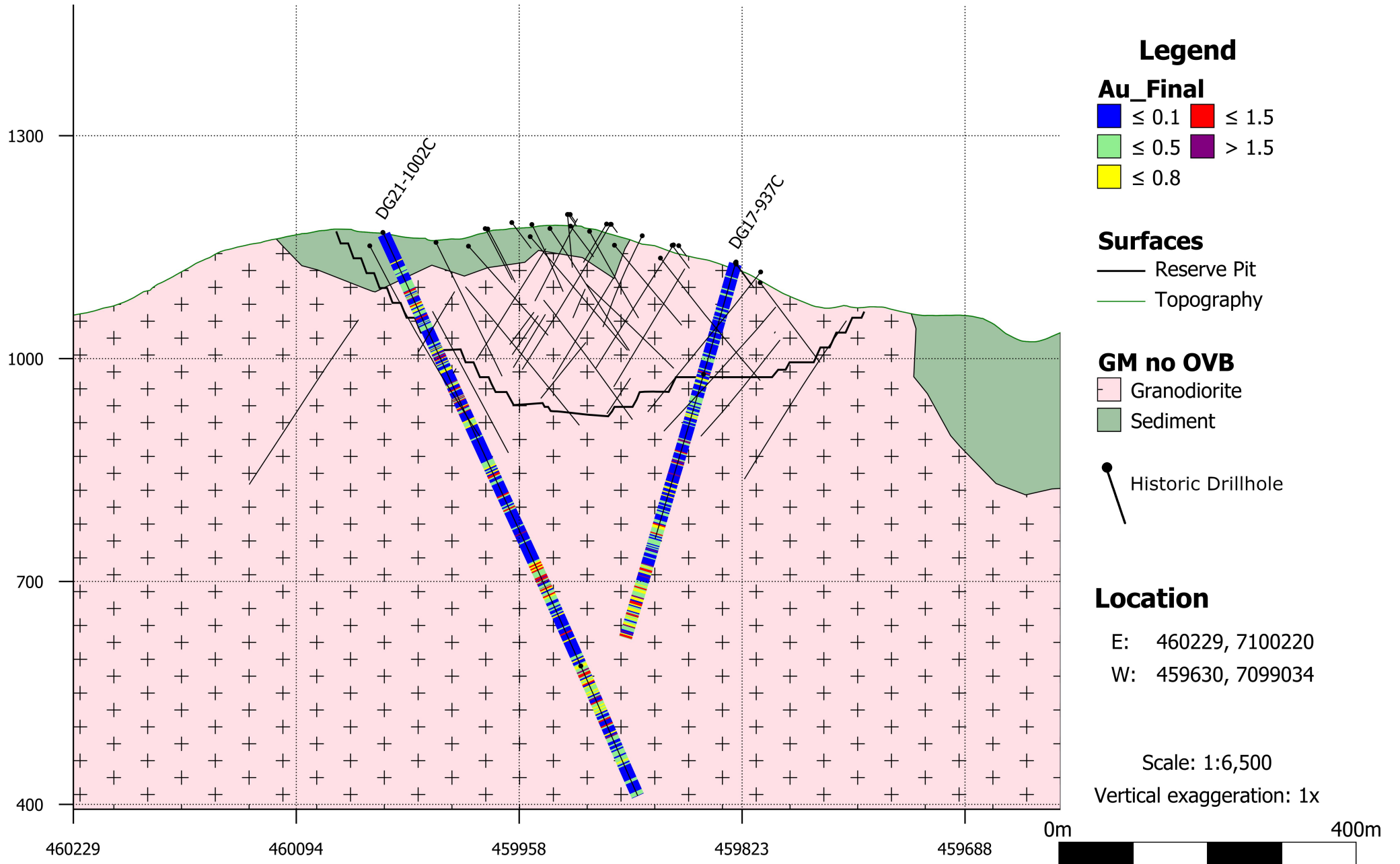
Location

E: 459688, 7100130
W: 459543, 7098979

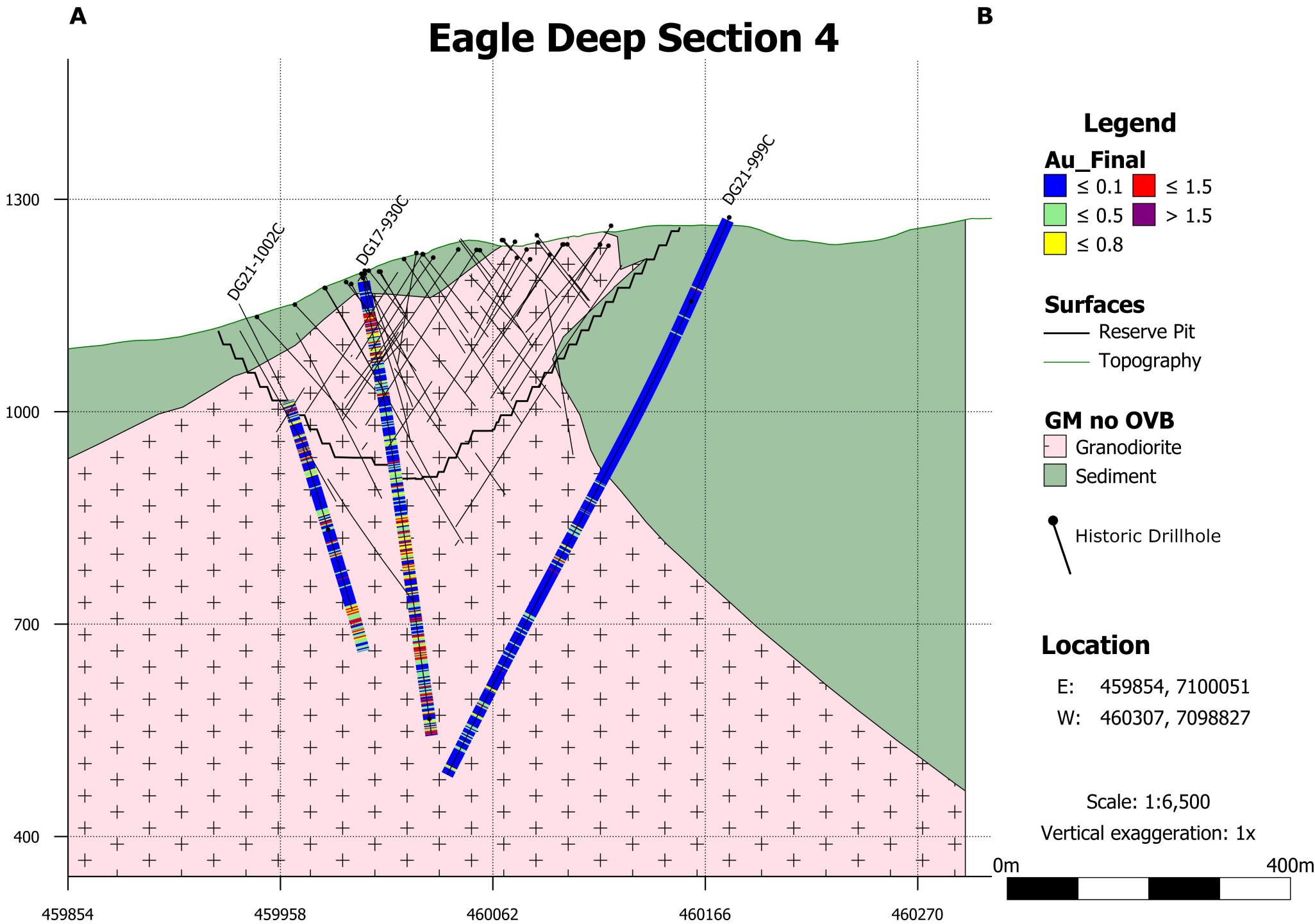


A

Eagle Deep Section 3

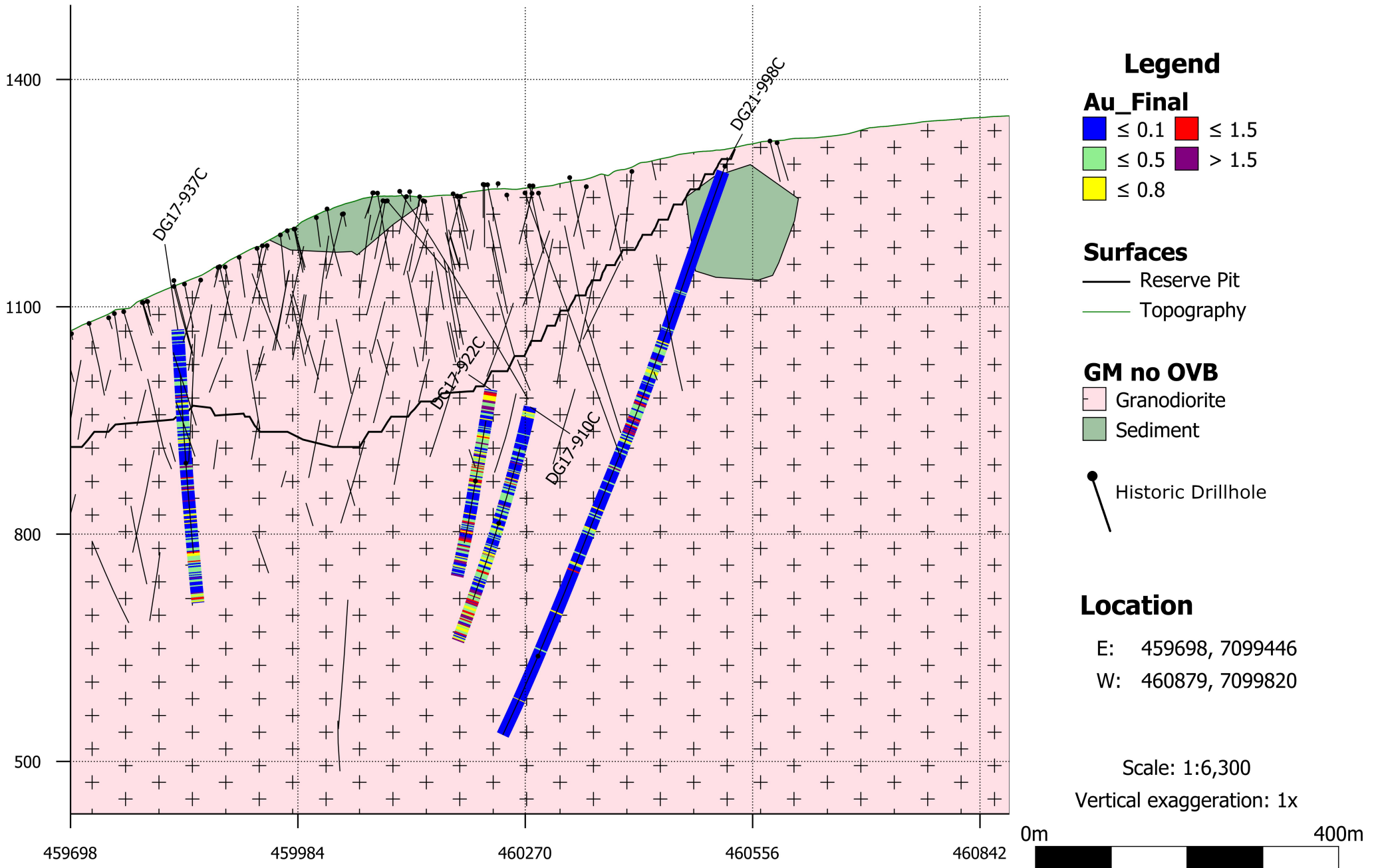
B

Eagle Deep Section 4

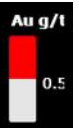


A

Eagle Deep Section 5

B

- Granodiorite
- Metasediment
- Reserve Pit
- Au Mineralization



Bonus Ore

Eagle West

DG09-365C
26m of 1.20 Au g/t

DG21-993C
228m of 0.56 Au g/t
Incl.
175m of 1.22 Au g/t

DG08-357C
36m of 1.07 Au g/t

DG08-357C
232m of 0.5 Au g/t

DG17-930C
187m of 0.61 Au g/t

DG09-360C
63m of 0.80 Au g/t

DG09-361C
77m of 0.90 Au g/t

DG17-910C
60m of 1.08 Au g/t

DG17-910C
71m of 0.80 Au g/t

DG21-998C
82m of 0.57 Au g/t

DG17-922C
238m of 0.60 Au g/t

Open to Depth

Plunge 00
Looking North

