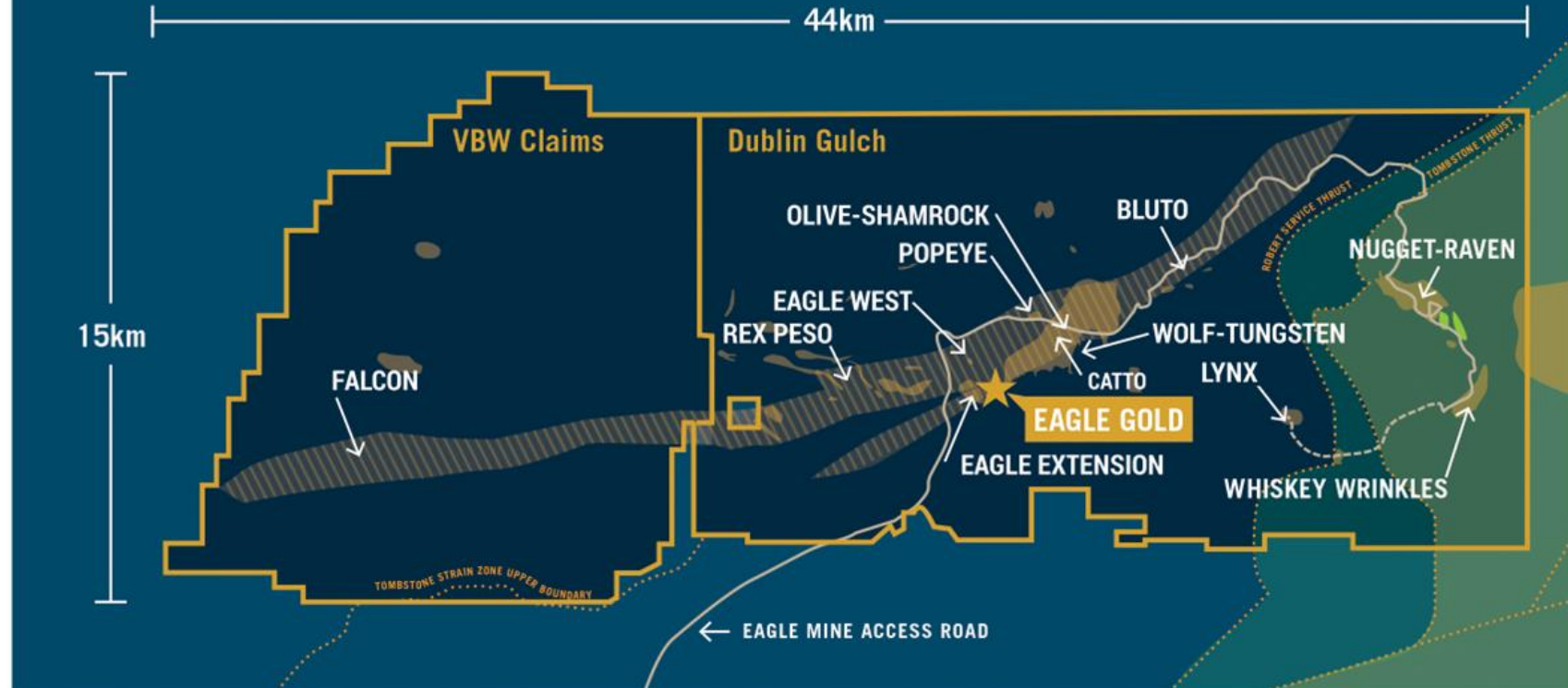


# DUBLIN GULCH PROPERTY



----- Planned Lynx Access

— Road

----- Regional Fault

Granodionite Stock

Potato Hill Trend

Galena Mafic Intrusive

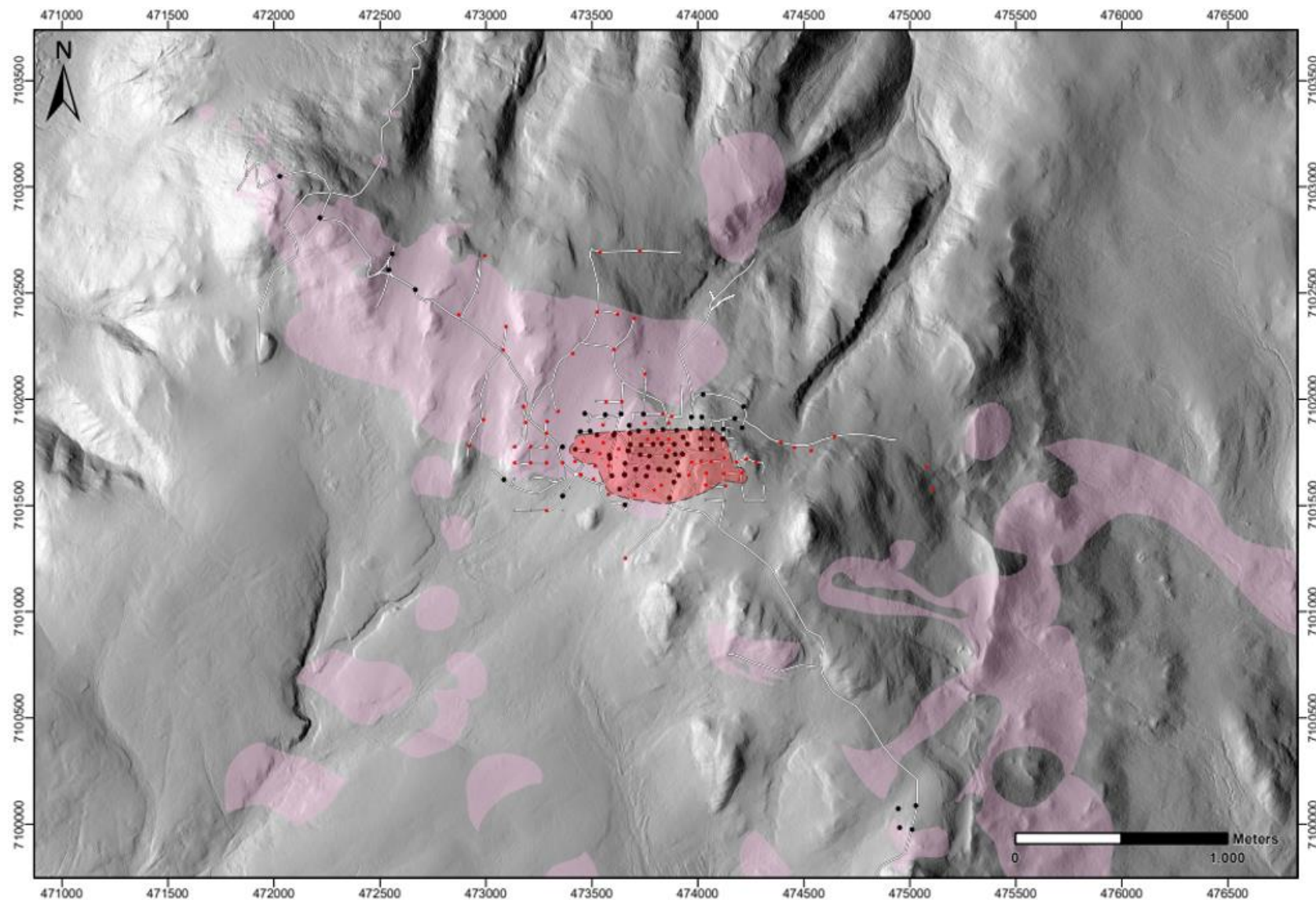
Keno Hill Metasediment

Earn Group Metasediment

Hyland Metasediment



# RAVEN RESOURCE OUTLINE AND NUGGET INTRUSIONS

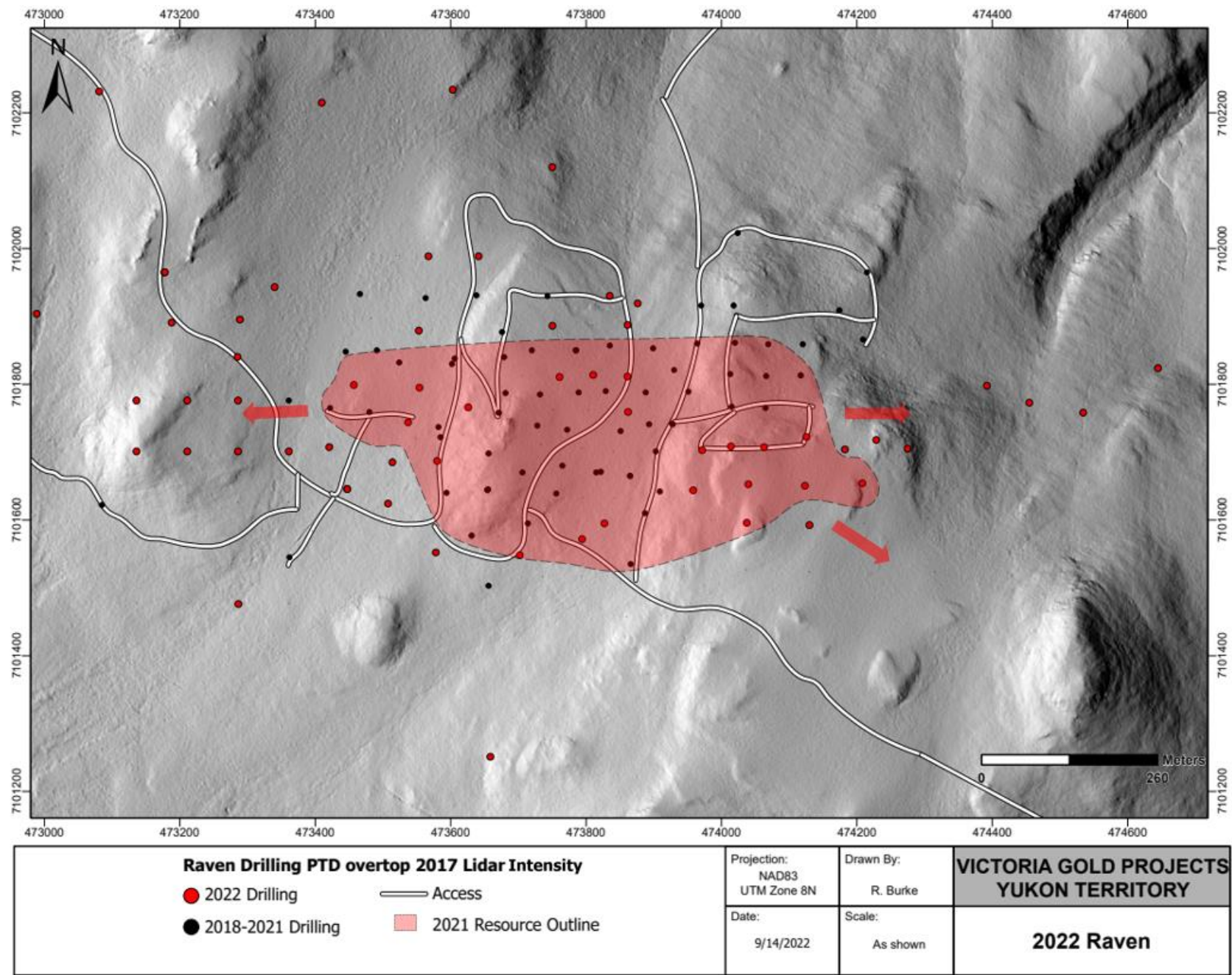


<b>Nugget Geology overtop 2017 Lidar Intensity</b>		Projection: NAD83 UTM Zone 8N	Drawn By: R. Burke	<b>VICTORIA GOLD PROJECTS YUKON TERRITORY</b>
● 2022 Drilling ● 2018-2021 Drilling ■ Nugget Stock & Mapped Intrusions	— Access ■ 2021 Resource Outline	Date: 9/14/2022	Scale: As shown	

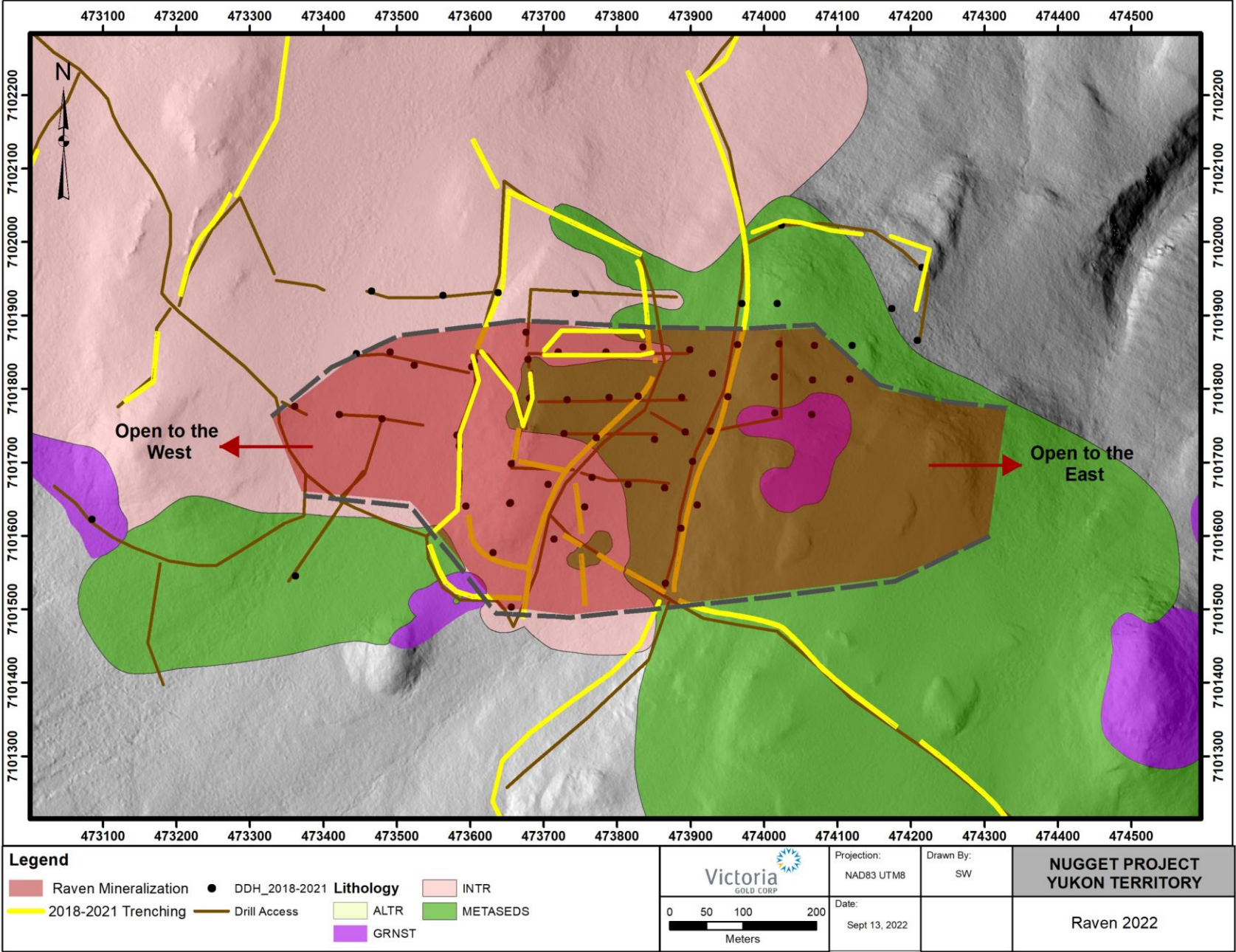
**2022 Raven**



# RAVEN PROJECT – RAVEN MRE EXTENTS AND DIAMOND DRILLING COLLARS

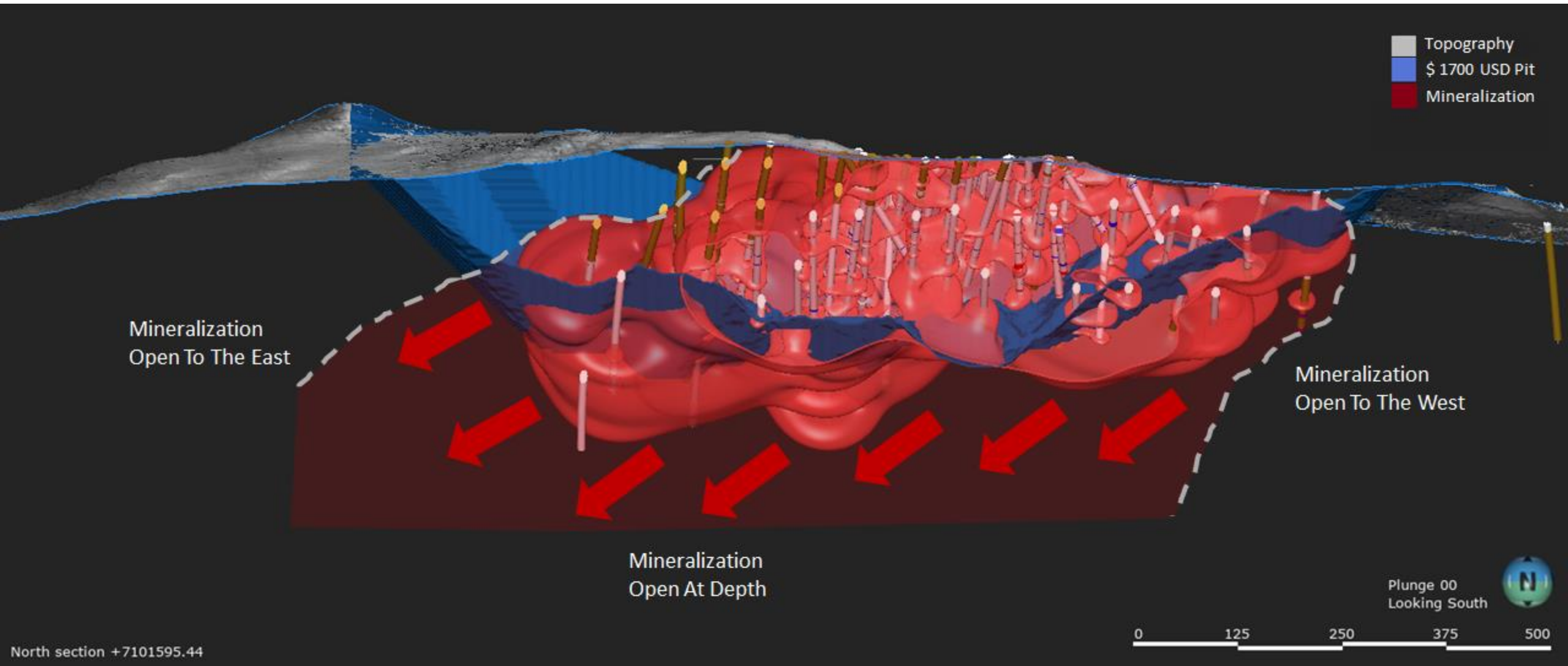


# RAVEN PROJECT – RAVEN MRE EXTENTS AND DRILLING WITH GEOLOGY

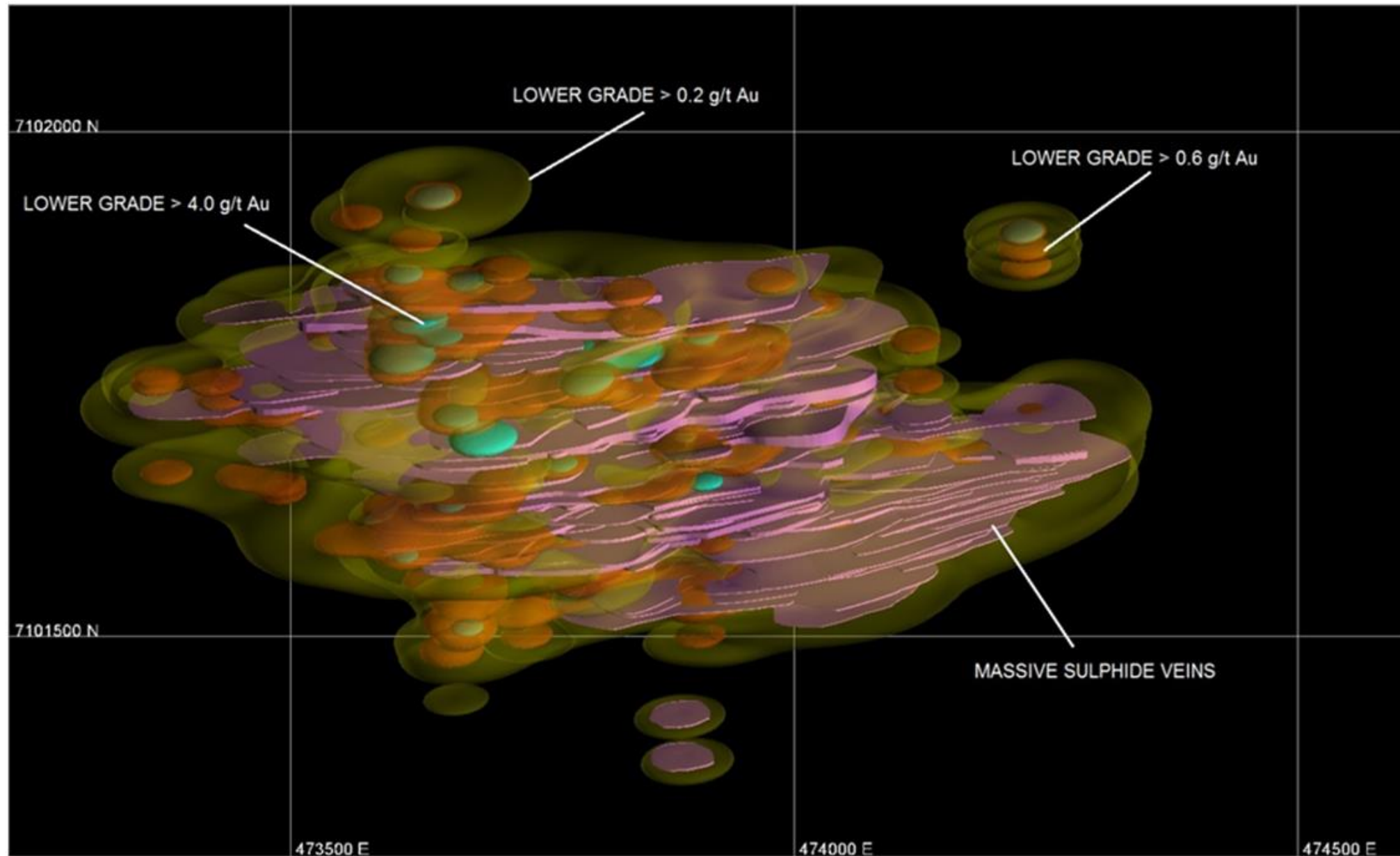




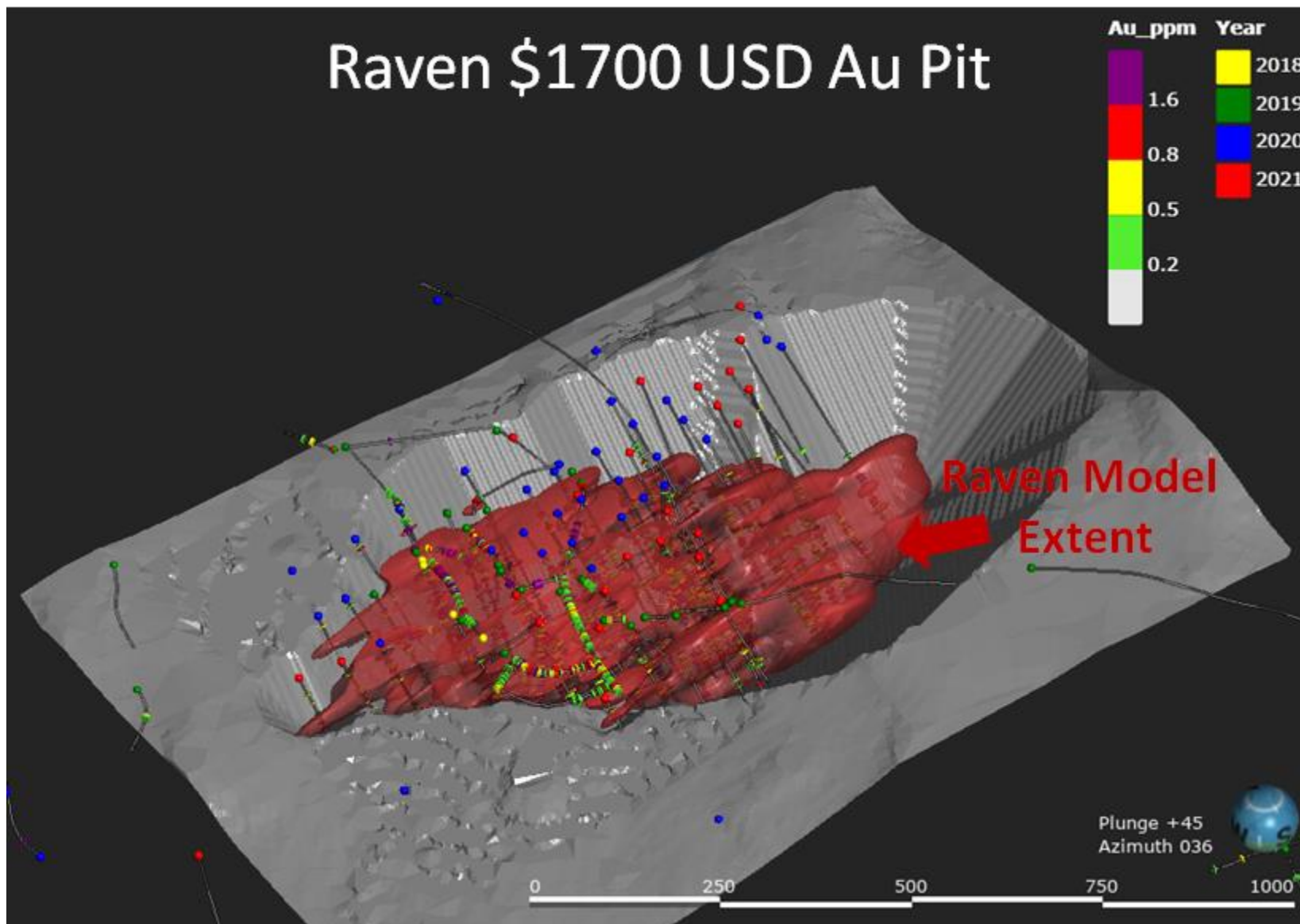
# IDEALIZED LONG-SECTION OF THE RAVEN RESOURCE PIT AND MRE BOUNDS



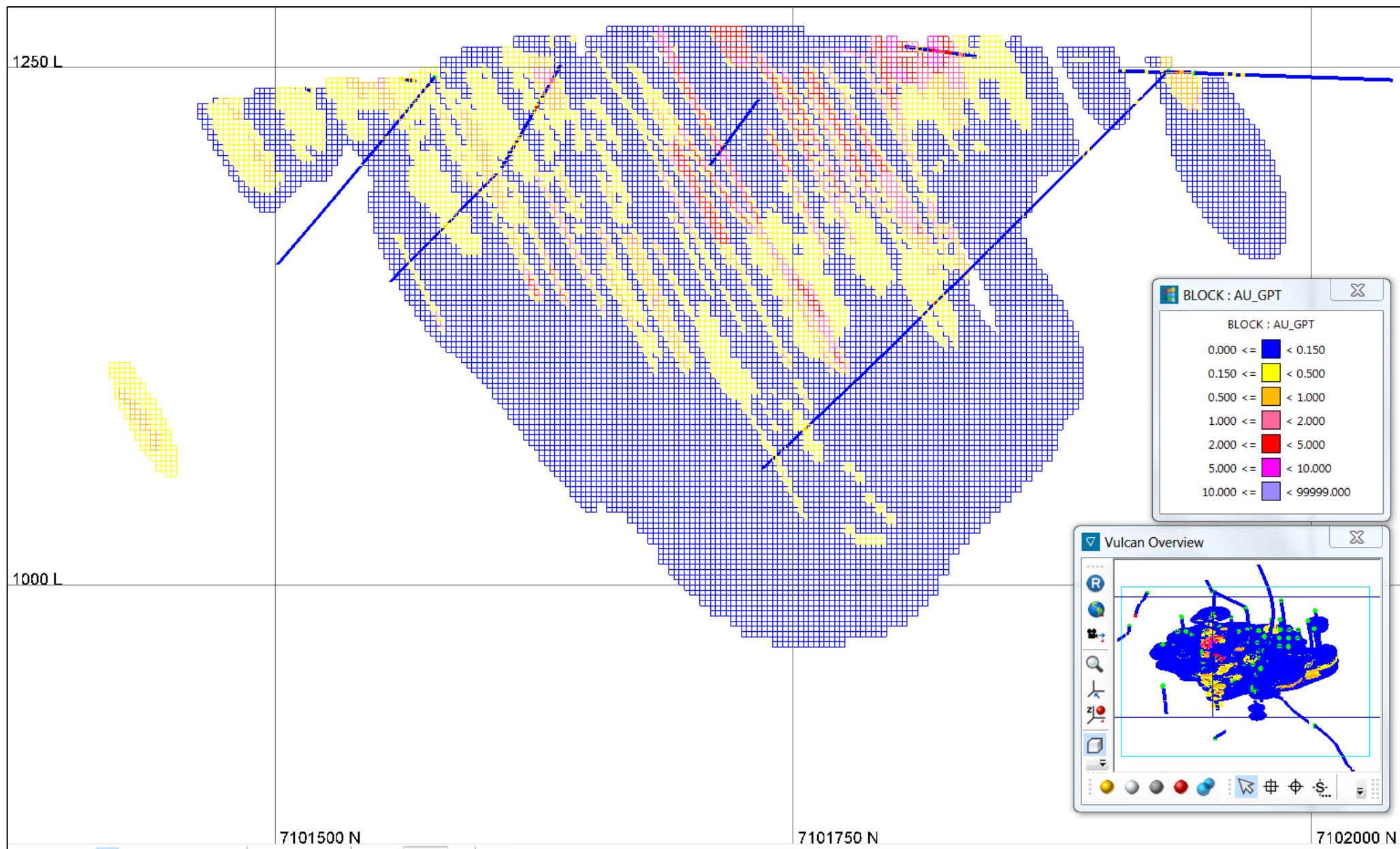
# RAVEN PROJECT – RAVEN MRE GEOLOGICAL MODEL DOMAINS



# RAVEN PROJECT – RAVEN MRE WITHIN RESOURCE PIT

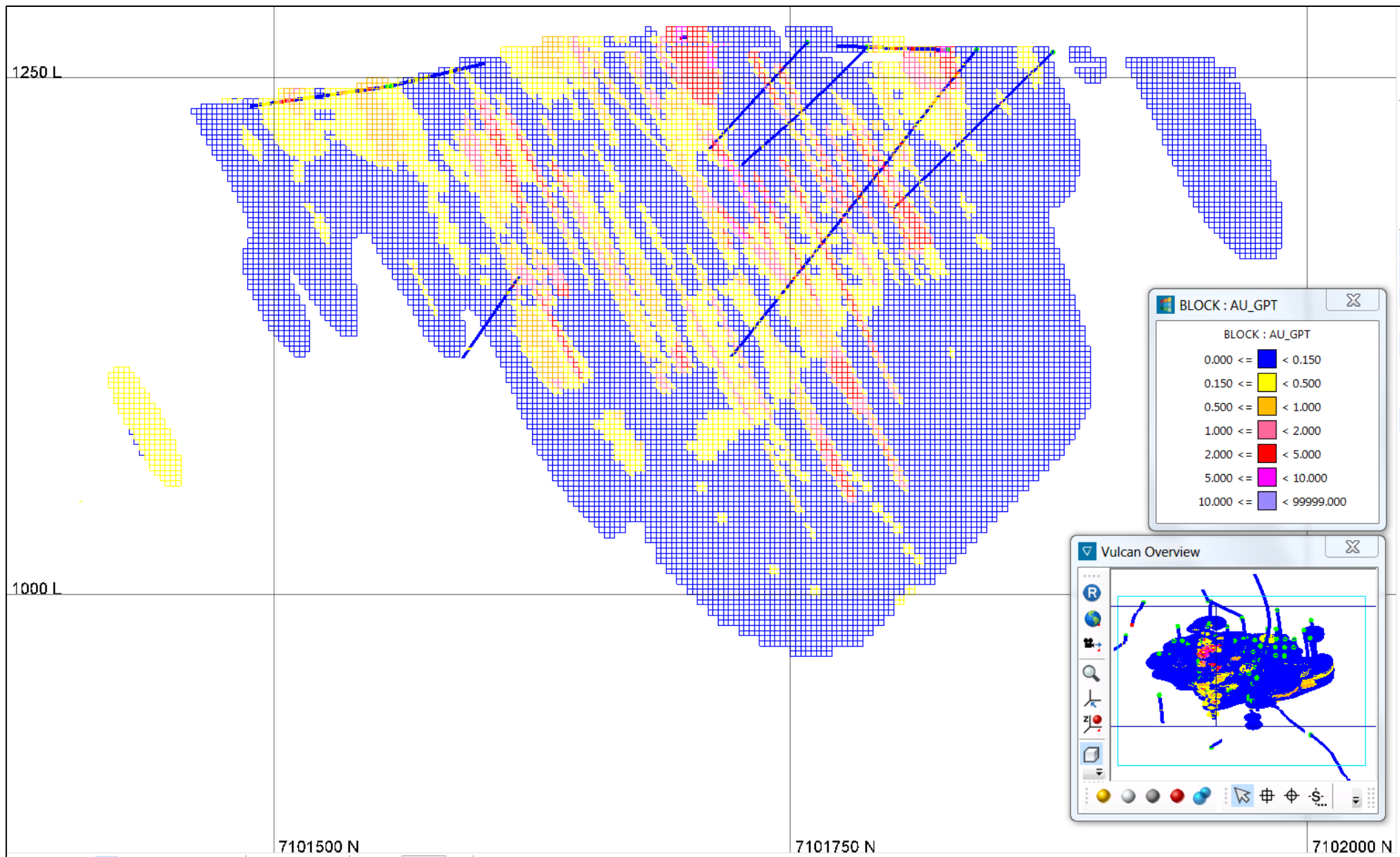


# RAVEN PROJECT – NS CROSS SECTION LOOKING WEST – SECTION 473640E

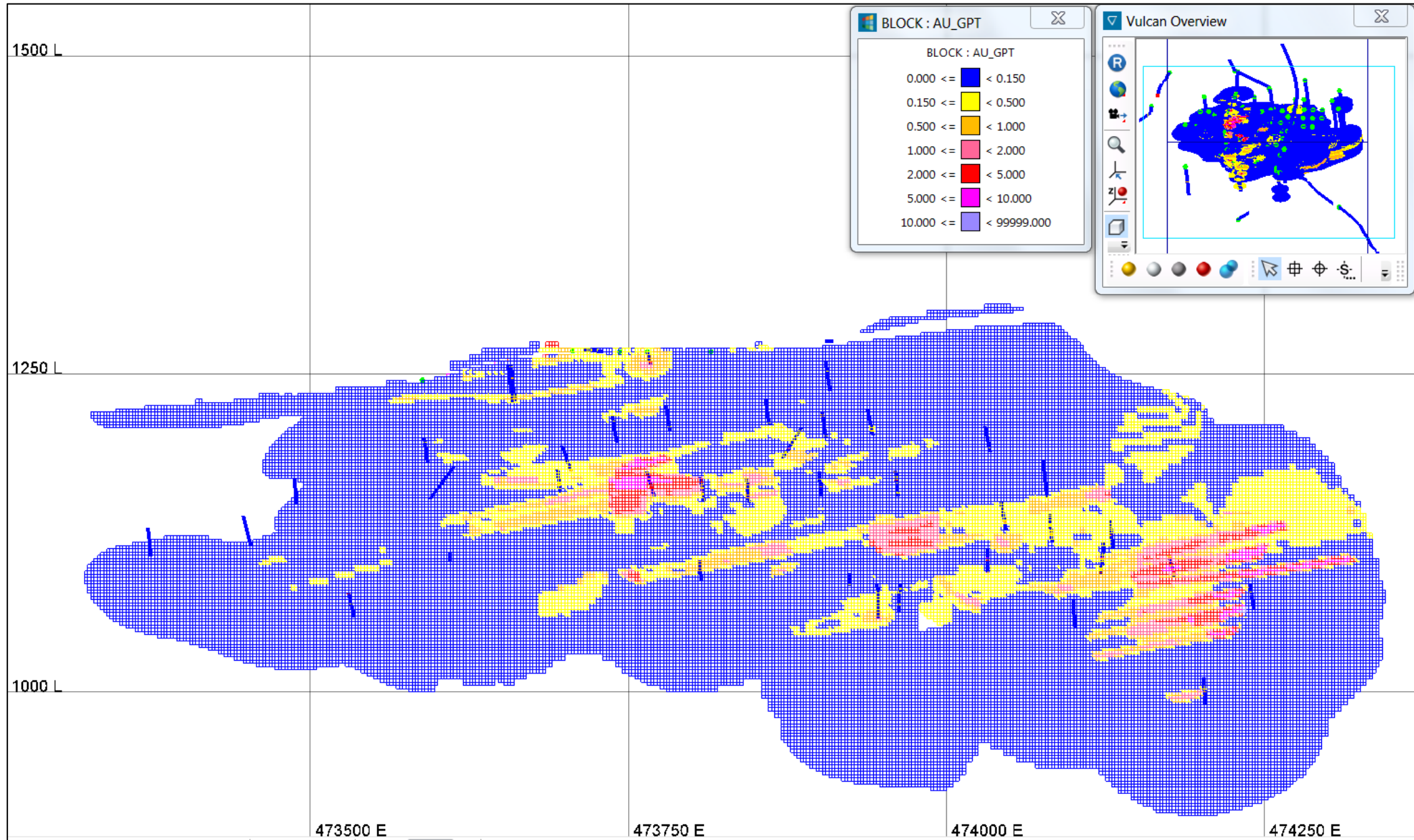




# RAVEN PROJECT – NS CROSS SECTION LOOKING WEST – SECTION 473680E



# RAVEN PROJECT – EW LONG SECTION LOOKING NORTH – SECTION 7101680N



# RAVEN PROJECT – EW LONG SECTION LOOKING NORTH – SECTION 7101720N

