



Careers
MINE GEOLOGIST

VITGOLDCORP.COM

VICTORIA GOLD MINE GEOLOGIST ALFONSO RODRIGUEZ

treasures his route to work at the Eagle Gold Mine and the stunning scenery along the way to his job on site; including the access road's unparalleled view of beautiful Mount Haldane.

As the Yukon, and the world reacts and responds to the COVID-19 pandemic, Alfonso and Victoria's employees are vigilantly adapting to new health protocols implemented by the company to ensure the safety of all employees and all Yukoners.

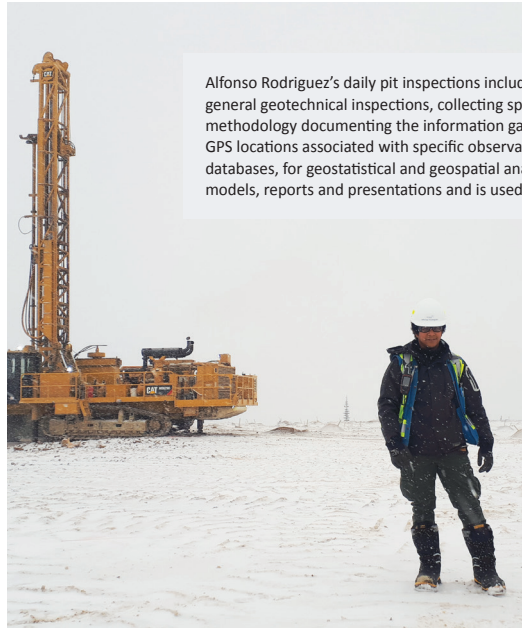
"We are continually stepping up measures to protect our workforce, our contractors and the community," says Victoria Gold President & CEO John McConnell. "A third-party occupational health and safety service provider is screening all employees before they travel to the mine and we will continue to update our plans and procedures as the situation requires."

The company is now operating on a four-week shift rotation and is only utilizing charter air services, versus scheduled commercial flights, to transport employees to Mayo Airport.

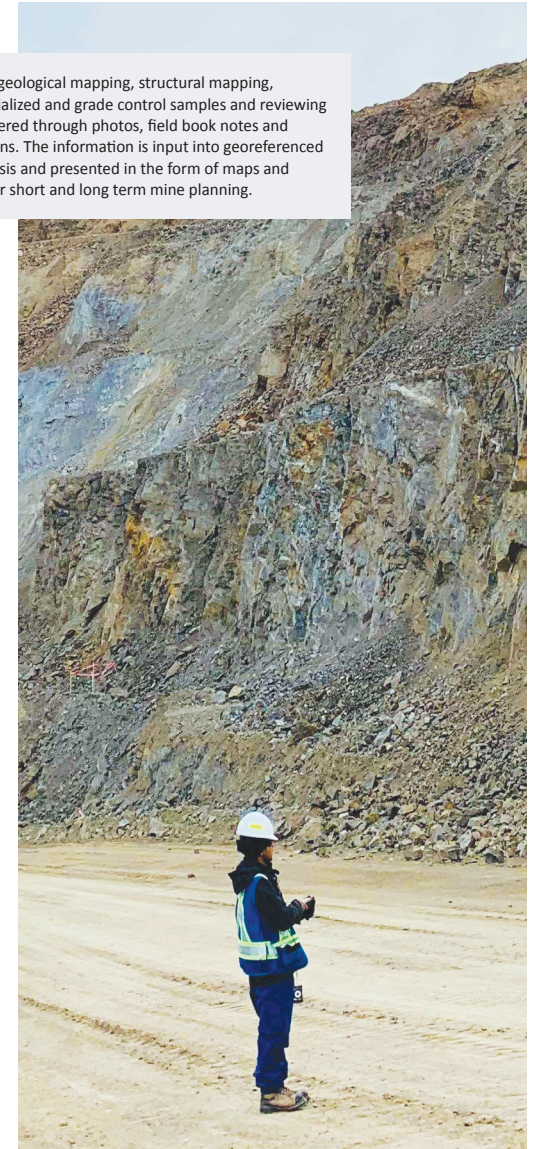
"A typical day, which we have adapted to ensure social distancing and the most up-to-date recommendations from public health agencies, includes me preparing an ore management plan, which includes material mined up to the morning of the day before, with its grade and the prediction of grade for the next 24 hours. I also prepare a map, called the 'The Dig Map' and review information from geological field samples," says Alfonso. "I undertake a pit inspection and provide information to Victoria's Geology, Mine Planning, Plant Processing and Environmental teams, among others, so that in short, the company knows best where to mine."

"Communications at camp are second-to-none, which helps me stay in touch with friends and family," continues Alfonso. "I really appreciate Victoria's preventative measures that have enabled operations at the Eagle Gold Mine to continue."

For the latest updates about COVID-19 in the territory, Victoria Gold encourages all Yukoners to visit yukon.ca.



Alfonso Rodriguez's daily pit inspections include geological mapping, structural mapping, general geotechnical inspections, collecting specialized and grade control samples and reviewing methodology documenting the information gathered through photos, field book notes and GPS locations associated with specific observations. The information is input into georeferenced databases, for geostatistical and geospatial analysis and presented in the form of maps and models, reports and presentations and is used for short and long term mine planning.



**VICTORIA GOLD IS PROUD
TO HAVE YUKONERS AT WORK**

**IF YOU ARE A YUKONER WITH MINING EXPERIENCE,
WE ENCOURAGE YOU TO CONNECT WITH US.**

Victoria is currently hiring tradespeople, equipment operators, process/crusher operators and other positions to work at the Eagle Gold Mine. Visit the "Work For Us" page on our website at vitgoldcorp.com/contact/work-for-us/ and send your resume to greatpeoplework@vitgoldcorp.com.

ABOUT VICTORIA GOLD & THE EAGLE GOLD MINE

The Eagle Gold Mine, now in production, is part of Victoria's 100-per cent-owned Dublin Gulch Property located approximately 375 kilometres north of Whitehorse and 85 kilometres north, northeast of the Village of Mayo within the traditional territory of the First Nation of Na-Cho Nyak Dun. The property is accessible by road year-round and is connected to Yukon Energy Corp's electrical grid. The mine will be a significant contributor to Yukon employing 350 to 400 people.

