



COMMUNITY INVOLVEMENT

VIRTUAL OPEN HOUSE FORUM

VICTORIA GOLD IS PLEASED TO ANNOUNCE THE LAUNCH OF THE COMPANY'S PRO-ACTIVE AND INNOVATIVE VIRTUAL OPEN HOUSE FORUM to ensure all interested Yukoners and communities can freely and readily review the proposed Eagle Gold Mine Extension Project information and provide their feedback, while remaining safe and healthy in light of COVID-19.

The intent of the Virtual Open House Forum is to provide information on the proposed Eagle Gold Mine Extension Project ("The Project") with a user-friendly platform, which allows opportunities to comment and ask the Victoria Gold team questions.

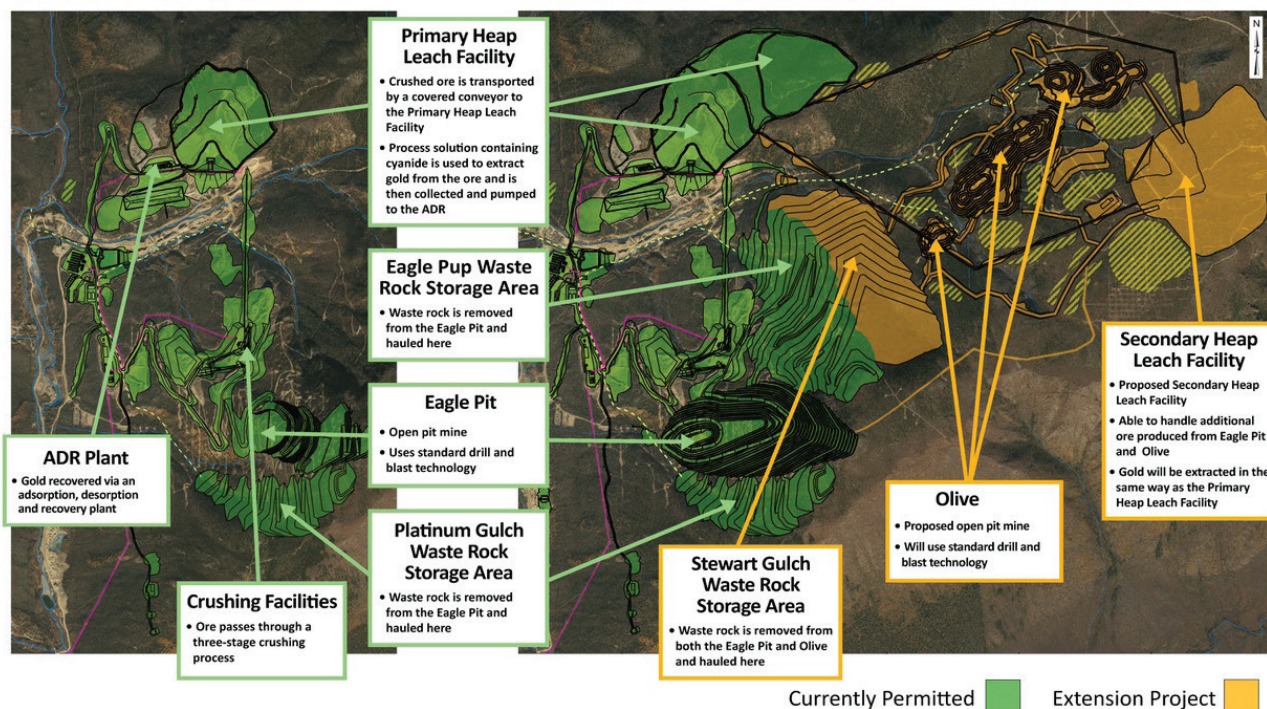
"We continue to develop detailed information in support of the Project and Yukoners' input will play a critical role in this process," says Victoria Gold President & CEO John McConnell. "The information contained on this website, and the valuable feedback we'll receive here, will be used to complete a formal Project Proposal that will, in due course, be submitted to the Yukon Environmental and Socio-economic Assessment Board."

The submission of the Project Proposal will be followed by a rigorous assessment and public review process to confirm the Eagle Gold Mine Extension Project is carried

Eagle Gold Mine Extension Project

CURRENT SITE FOOTPRINT

PROPOSED EXTENSION PROJECT END OF MINE FOOTPRINT



out in a responsible way. Victoria Gold is proposing to extend the life of the Eagle Gold Mine.

"We cannot understate the importance of Yukoners' and community involvement in the Consultation process," continues McConnell.

Everyone is encouraged to review the Project information and contribute feedback to Victoria Gold via eaglegoldmine.ca/extensionproject/

VICTORIA GOLD IS PROUD TO HAVE YUKONERS AT WORK

IF YOU ARE A YUKONER WITH MINING EXPERIENCE, WE ENCOURAGE YOU TO CONNECT WITH US.

Victoria is currently hiring tradespeople, equipment operators, process/crusher operators and other positions to work at the Eagle Gold Mine. Visit the "Work For Us" page on our website at vgcx.com/contact/work-for-us/ and send your resume to greatpeoplework@vgcx.com.

ABOUT VICTORIA GOLD & THE EAGLE GOLD MINE

The Eagle Gold Mine, now in production, is part of Victoria's 100-per cent-owned Dublin Gulch Property located approximately 375 kilometres north of Whitehorse and 85 kilometres north, northeast of the Village of Mayo within the traditional territory of the First Nation of Na-Cho Nyak Dun. The property is accessible by road year-round and is connected to Yukon Energy Corp's electrical grid. The mine will be a significant contributor to Yukon employing 350 to 400 people.

